

# Privatzimmer Bäumlegasse Dornbirn

## Bright Rooms, shared Eat-In Kitchen with Terrace and Garden



### Pretty private – almost like home!

Bright private non-smoking rooms in a shared house.

All rooms offer access to a spacious eat-in kitchen/dining room with terrace, wonderful views to the surrounding mountains and shared bathrooms/toilettes. The house also offers a laundry room with a washing and drying machine, garage for bicycles, storage space for suitcases and a garden. All these facilities can be used and are shared between tenants.

The house is in a quiet but central location and only a few minutes walk away from bus stops, train station, river named Dornbirner Ache, beautiful natural recreation area, various outdoor and indoor sports facilities, University of Applied Science, Trade Fair Premise, shopping centre and hospital. The market square with restaurants and shops is 15 minutes walk away.

The rental fees depend on the duration of stay and the room size (approx. €590,- to €880,- per month). Heating and electricity, WLAN and LED HD Sat-TV is included in the costs. Bed linen, bath towels and cleaning service is offered.

I am looking forward to your enquiry and I am happy to answer any further questions. If interested, please send me an email with your desired duration of stay and date. E-Mail: [louis.tornare@gmail.com](mailto:louis.tornare@gmail.com)

### Room descriptions

#### First Floor

Spacious Room on 1st Floor - available from now until 29. November 2024 Size of mattress: 180cm x 200cm



Shared Kitchen on 1st Floor offering access to large terrace





View to surrounding mountains from the terrace and garden.



Shared bath and shower rooms with toilettes on 1st and 2nd Floor





## Second Floor

Room with Balcony on 2nd Floor - available from 1. July 2025



Size of mattress: 140cm x 200cm

Room with Sleeping Platform on 2nd Floor - available from 1. May 2025



Size of mattress: 140cm x 200cm

Room on 2nd floor with Sleeping Platform - available from 1. March 2025



Size of mattress: 120cm x 200cm

Room on 2nd floor with nice view to the Swiss mountains and sunset

- available from 3. March 2024







Size of mattress: 140cm x 200cm

Room on 2nd floor with Sleeping Platform - available from now on



Size of mattress: 140cm x 200cm

## Apartment on the ground floor with two bedrooms

Room East offering access to the garden - not available at the moment



Shared Kitchen and Living room



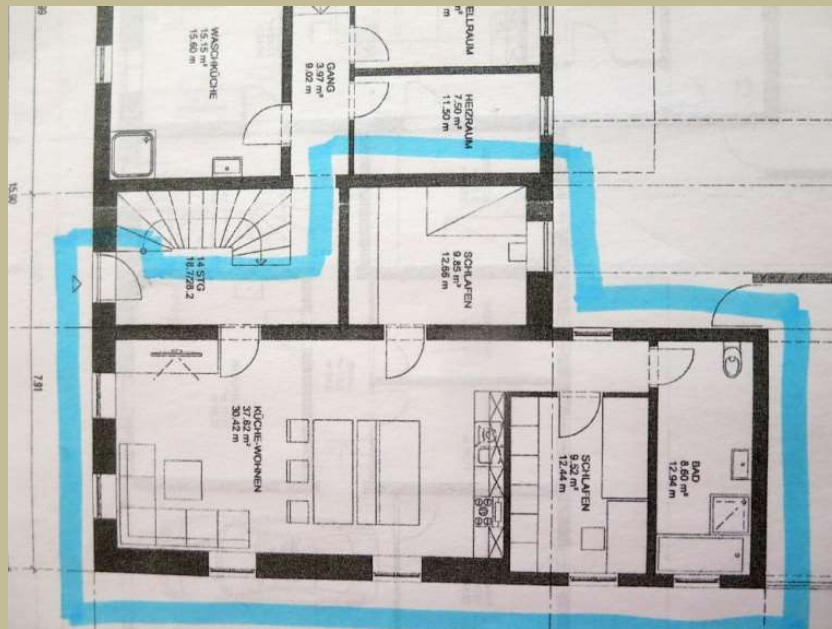
Room South - available from 16. December 2024





shared toilet and bathroom

The entire 3-room apartment on the ground floor with direct access to the garden - not available at the moment





## Basic rooms on the ground floor

Room East - available from 3. March 2025



Room West - not available at the moment



Laundry Room



Bike Storage

